

Health Equity: From Lens to Science

Symposium Program

Keynote Speaker



Derek M. Griffith, PhD

Founder and Co-Director of the
Racial Justice Institute,

Founder and Director of the
Center for Men's Health Equity,

Professor of Health Management
and Policy and Oncology at
Georgetown University

Details

Date:

Thursday
January 25, 2024

Time:

9 a.m. to 12 p.m. PT

Location:

Virtual

The "**Health Equity: From Lens to Science**" symposium aims to lay the foundation for creating a structured approach to embed health equity in research, starting from its foundational concepts to its broad application. While health equity is a broadly used term, it can suffer from a lack of rigor and clarity around principles and strategies underlying the concept.

The symposium will bring together leaders and learners representing academics, health practitioners, policy experts, elected officials, epidemiologists, data scientists, sponsors, thought leaders, community members and leaders, and other stakeholders working on health, public health, and health equity issues.

Steering Committee: Kelly Taylor, PhD, MS, MPH; Maeve Forster, MS; Nova Wilson, MPH; Debbie Brickley, DrPH, MPH; Betty Janey, MSW; Taytum Sanderbeck; Susie Welty, MPH

Contact Us: healthequityscience@ucsf.edu

Partners

Center for Pandemic
Preparedness and Response

UCSF

University of California
San Francisco

Genentech
A Member of the Roche Group



Morning Agenda

9 a.m. (PST)	Welcome and Opening Remarks by Tung Nguyen, MD, Professor & Associate Vice Chancellor for Research Inclusion, Diversity, Equity, and Anti-Racism, UCSF
9:15 a.m.	Keynote Address by Derek Griffith, PhD
10 a.m.	Break
10:15 a.m.	<p>Panel discussion: Health Equity Lens and Community The panel of experts will discuss key principles and strategies for health equity science to ensure an impact on policy and benefit to community.</p> <p>Panelists:</p> <ul style="list-style-type: none">• Zea Malawa, MD, MPH• Kim Rhoads, MD, MPH• Erica Sosa, PhD• Lisa Tealer
11 a.m.	Break
11:05 a.m.	<p>Panel Discussion: Health Equity Lens and Data The panel discussion will focus on critical competencies for data science in health equity research, including both standard and new approaches to data.</p> <p>Panelists:</p> <ul style="list-style-type: none">• Rhonda BeLue, PhD• William Brown, PhD, DrPH, MA• Sophia Kostelanetz, MD• Paul Wesson, PhD
11:50 a.m.	Closing Remarks from our Sponsor
12 p.m.	End

Bios

Derek M. Griffith, PhD



Dr. Derek M. Griffith is a Founding Co-Director of the Racial Justice Institute, Founder and Director of the Center for Men's Health Equity, Member of the Lombardi Comprehensive Cancer Center, and Professor of Health Management & Policy and Oncology at Georgetown University. He also serves as the Chair of Global Action on Men's Health – a global men's health advocacy organization.

Kelly Taylor, PhD, MS, MPH



Dr. Taylor is an Assistant Professor of Medicine in the Division of Prevention Science and Director of the Domestic Portfolio in the Center for Pandemic Preparedness and Response in the Institute for Global Health Sciences at the University of California San Francisco. Her research aims to both train leaders in health equity science and build transformative public health solutions with community partners to advance equity and saves lives by centering the perspective of those individuals and communities who are experiencing risks for poor health outcomes and empowering both them and their care teams to optimally mitigate that risk. As a part of that work, she leads CULTIVATE, Combating Unequal Treatment in Healthcare Through Virtual Awareness and Training in Empathy, which is a team science developed study that explores decreasing bias in health care experienced by Black, Indigenous and People of Color using patient-provider virtual reality simulations. Dr. Taylor was awarded National Institutes of health pre-doctoral and postdoctoral traineeships to study health services research and AIDS prevention studies respectively. She holds degrees from the University of Michigan, Vanderbilt University, and the University California Berkeley.

Zea Malawa, MD, MPH



Zea Malawa is a mother, pediatrician and public health professional committed to improving health outcomes for children of color. Upon completing her undergraduate degree at Columbia University, she earned a medical doctorate from UCLA and a master's degree in public health from UC Berkeley. Currently, Dr. Malawa is the director of Expecting Justice, a public health program that uses systems change and justice-oriented approaches to dismantle racism and close the racial gap in birth outcomes. In that capacity, she directs the Abundant Birth Project, the first pregnancy Guaranteed Income program in the US. She is the Perinatal Equity Medical Director at the San Francisco Department of Public Health and Adjunct Faculty at UC Berkeley School of Public Health. She also sees patients at General Hospital in San Francisco and serves as the Vice Chair of San Francisco's Department of Early Childhood Commission.

Bios

Kim Rhoads, MD, MPH



Dr. Rhoads is an associate Professor of Epidemiology and Biostatistics and the Director of the Office of Community Engagement for the UCSF Helen Diller Family Comprehensive Cancer Center (HDFCCC). In this role, she provides leadership for UCSF cancer researchers and their engagement with community and patients advocates to ensure that the Center's research and institutional practices serve to reduce the burden of cancer, address inequities in care and improve survival. She also leads a vibrant community education program to increase cancer knowledge, awareness, screening, and early detection. Dr. Rhoads' research training and experience is broad and includes basic and molecular work in endothelial cell regulation and angiogenesis; population based, health services research highlighting the relationship between evidence-based cancer care and survival; and community based participatory research focused on environmental exposures and cancer. Dr. Rhoads earned an MD from the UCSF School of Medicine, a Master's degree in Health and Medical Sciences from UC Berkeley, a Master's degree in Public Health, Health Management and Policy, from the Harvard T. Chan School of Public Health as a California Endowment Scholar in minority health policy. Rhoads served as the inaugural Philip R. Lee Fellow in Health Policy at UCSF.

Erica Sosa, PhD



Dr. Sosa is a Professor in Public Health and the Associate Dean for Research in UTSA's College for Health Community and Policy. As a bicultural researcher, Dr. Sosa has contributed to several community-based and culturally tailored research projects. As the Director of the Center for Community Based and Applied Health Research, she leads transdisciplinary research projects that include community stakeholders and a community advisory board aimed at improving health equity.

Lisa Tealer



Lisa M. Tealer is the Executive Director of the Bay Area Community Health Advisory Council (BACHAC), a San Mateo County based grassroots community health organization. She serves on several health related boards and is the Co-Chair of the Community Advisory Board for the UCSF Cancer Center. Prior to leading BACHAC, she was a BACHAC volunteer for many years and worked in the biotech industry for 30+ years.

Bios

Debbie Brickley, DrPH, MPH



Dr. Brickley is the Director of Learning for UCSF's Center for Pandemic Preparedness and Response (CPPR) and has 20 years of experience in global health research and training. She has a background in epidemiology and biostatistics, primarily focused on global HIV prevention research and training. In the early days of the COVID-19 pandemic, she served as a contact tracer for the city of San Francisco, after which she began leading training efforts for contact tracers and case investigators in California and beyond. Dr. Brickley is also Deputy Director of the International Traineeships in AIDS Prevention Studies (ITAPS) program. This program, ongoing since 1988 and funded by NIMH, provides training and mentoring in HIV prevention research design, scientific manuscript writing, grant writing and mentoring for scientists from resource-limited settings.

Rhonda BeLue, PhD



Professor in the Department of Public Health at the University of Texas, San Antonio and Associate Dean for Community Engagement and Partnerships. Her work focuses on improving health and health care access among families and organizations in black/BIPoC communities in the US and global south. She has dedicated her career to the elimination of health inequities by taking a holistic approach including, organizational development, innovative methods, community-based participatory research, cultural arts activities.

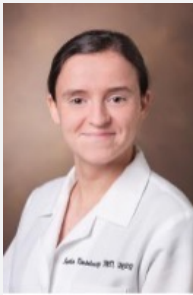
William Brown, PhD, DrPH, MA



Dr. Brown is an Associate Professor of Medicine & Epidemiology and Biostatistics at UC San Francisco, an AMIA Board Director and was a Vice Chair for the AMIA 2022 conference. He is the Founding Director of CODE Lab, Director of DEI for the Bakar Computational Health Science Institute, Co-Director of the T32 DaTABASE for Health Disparities Research Fellowship, Associate Director at the Research Coordinating Center to Reduce Disparities in Multiple Chronic Diseases (RCC RD-MCD), and Implementation Science Lead for the Center for Digital Health Innovation. His research involves Big Data, mHealth, Natural Language Processing (NLP), Machine Learning (ML), and Standards [FHIR, OMOP, UMLS, etc.] as applied to clinical and behavioral health disparities research, with underserved communities. Using community-based participatory research he works to reduce chronic illness (HIV, diabetes, opioids) and health disparities among vulnerable populations (i.e., African-Americans, Latinos, youth, and LGBT). He also teaches and mentors graduate students.

Bios

Sophia Kostelanetz, MD, MPH



Dr. Kostelanetz currently serves at One Brooklyn Health in the Department of Medicine as the Health Equity Lead and works as a Primary Care Physician in Adolescent and Adult medicine. Dr. Kostelanetz also leads strategic priorities via the newly established Office of Community Health and Health Equity at OBH which aims to strengthen the system's efforts to provide equitable care and eliminate racial and gender health inequities rooted in historical injustices.

Paul Wesson, PhD



Dr. Paul Wesson is an Assistant Professor of Epidemiology and Biostatistics, as well as the Associate Director for Science for the Institute for Global Health Sciences and the co-Director of the UCSF Scientific Working Group on Intersectionality. Dr. Wesson's research focuses on the application of novel epidemiologic and statistical methods to improve public health surveillance of hidden and hard-to-reach populations with the ultimate goal of improving health equity for these groups.